



GAT MONTHLY MEMBERSHIP PROGRESS REPORT

Results as of: 2/28/2022

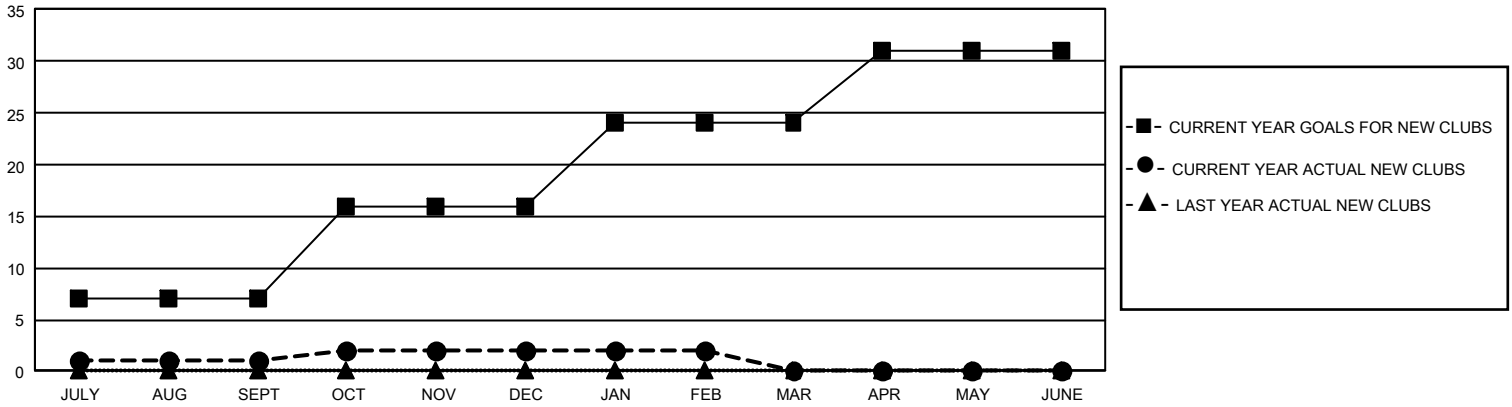
GMT Constitutional Area 1, Group J

REPORT DOES NOT INCLUDE CLUBS IN UNDISTRICTED AREAS.

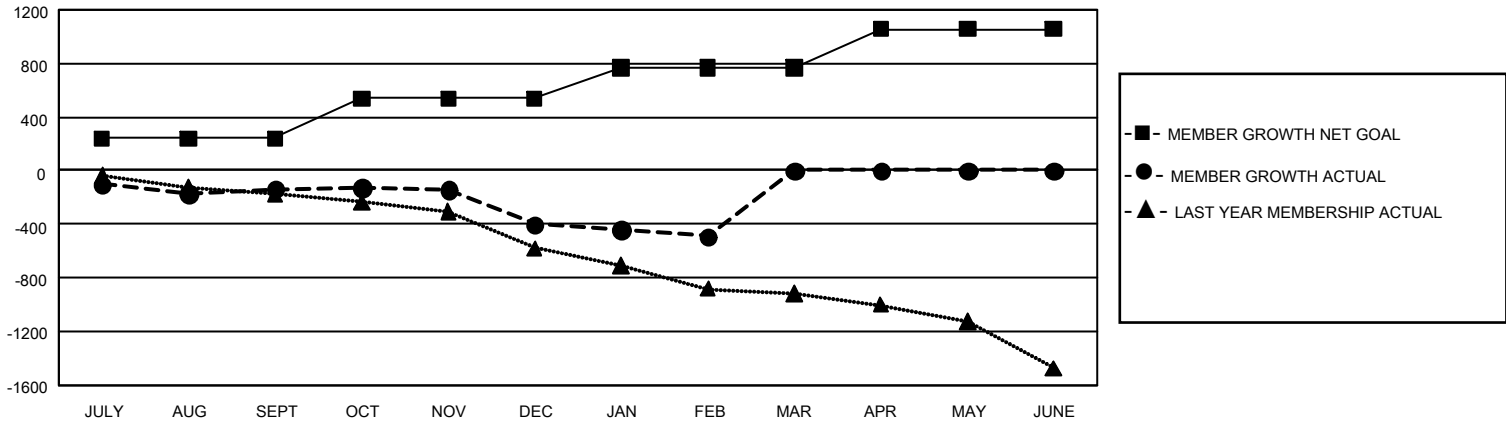
Clubs			
RESULTS FOR 2021-2022			
QUARTER	NEW CLUB GOAL	NEW CLUBS	DROPPED CLUBS
JULY/AUG/SEPT	21	1	10
OCT/NOV/DEC	27	1	13
JAN/FEB/MAR	24	0	3
APR/MAY/JUNE	21	0	0

Members			
RESULTS FOR 2021-2022			
QUARTER	MEMBER GROWTH NET GOAL	MEMBER GROWTH ACTUAL	DROPPED MEMBERS ACTUAL (including transfers)
JULY/AUG/SEPT	241	561	629
OCT/NOV/DEC	297	521	728
JAN/FEB/MAR	231	299	351
APR/MAY/JUNE	287	0	0

GOALS AND ACTUAL NEW CLUBS CUMULATIVE



GOALS AND ACTUAL MEMBERS CUMULATIVE



DROPPED CLUBS: 26	417 CLUBS OF 935 ADDED 1 OR MORE NEW MEMBERS	<u>GENDER DISTRIBUTION</u>	
		MALE	14,749 (70.35%)
<u>DROPPED MEMBERS</u>		FEMALE	6,216 (29.65%)
DECEASED	237	NON BINARY	1 (0.00%)
CLUB CANCELLED	141	PREFER NOT TO ANSWER	0 (0.00%)
OTHER	1,330	TOTAL FAMILY UNIT MEMBERS	4,050
TOTAL	1,708	FAMILY MEMBERS PAYING HALF DUES	2,063

[CLICK HERE FOR CUMULATIVE MEMBERSHIP DATA](#)